

Technical Data Sheet

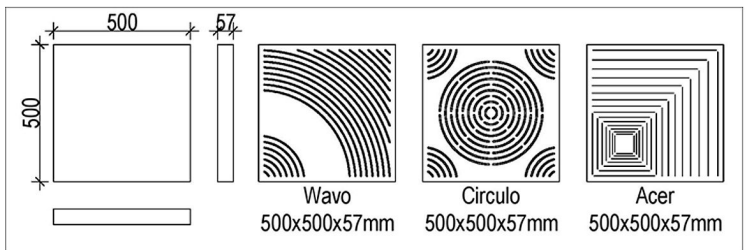
Products: Perforated acoustic panels – WavO, Circulo, Acer

Category: Sound absorption for walls and ceiling

Product Description

Perforated panel is acoustic lining for achieving of optimum sound absorption in the mid-range frequency (300-600Hz). **Acoustic fabric panels** are used for sound absorption on walls and ceiling in public and industrial buildings, radio and television studios, as well as broadcasting and voice-over rooms and auditoriums.




The typical voice-off loudness requires an adequate planning of the room's acoustics in order to provide good sound reception. This panel provides the customer with three options to project his space.



✓ **SUITABLE**
FOR INDOOR CONDITIONS

✓ **EXCELLENT**
ACOUSTIC PERFORMANCE

MODELS AND PHYSICAL CHARACTERISTICS

Models	Height, mm	Width, mm	Depth, mm	Weight, kg	Tolerance
 WavO	500	500	57	1.80	± 2%
 Circulo	500	500	57	1.80	± 2%
 Acer	500	500	57	1.80	± 2%

TECHNICAL CHARACTERISTICS

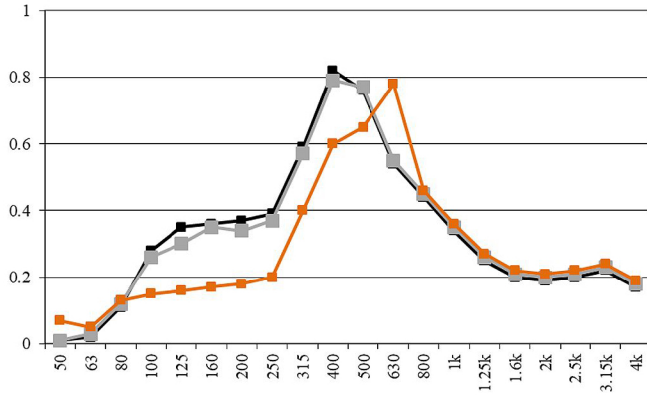
Description

Raw materials

Perforated MDF maple finish and acoustic foam

Installation

Suspension wires or direct glued



Sound Absorption Coefficient							
f [Hz]	as	as	as	f [Hz]	as	as	as
50	0.07	0.01	0.01	500	0.65	0.77	0.76
63	0.05	0.03	0.02	630	0.78	0.55	0.54
80	0.13	0.12	0.11	800	0.46	0.45	0.44
100	0.15	0.26	0.28	1k	0.36	0.35	0.34
125	0.16	0.30	0.35	1.25k	0.27	0.26	0.25
160	0.17	0.35	0.36	1.6k	0.22	0.21	0.20
200	0.18	0.34	0.37	2k	0.21	0.20	0.19
250	0.20	0.37	0.39	2.5k	0.22	0.21	0.20
315	0.40	0.57	0.59	3.15k	0.24	0.23	0.22
400	0.60	0.79	0.82	4k	0.19	0.18	0.17

■ ■ ■
ABSORPTION COEFFICIENT: Values in accordance with the standards: **EN 20654, ASTM C423 and EN 11654.** Values [$<100\text{Hz}$] are Non Standard Values.

TECHNICAL CHARACTERISTICS	Standard	Unit	Value
Class Reaction to Fire	DIN 4102	-	M1 or B1 s1 d0

Wood Colors



PACKING AND STORAGE

WavO – 9 pcs. per box; Box dimensions: 550 x 550 x 550 mm; Weight per box 18.20 kg.
Circulo – 9 pcs. per box; Box dimensions: 550 x 550 x 550 mm; Weight per box 18.20 kg.
Acer – 9 pcs. per box; Box dimensions: 550 x 550 x 550 mm; Weight per box 18.20 kg.

Indoor storage is obligatory. Storage in a dry place.